



Custom maps



Route tracking



Geofencing



Automatic alerts



SOS / Man Down



BACKGROUND

A multinational corporation runs a major oil operation in the Gulf of Guinea with one main and four smaller sites, encompassing 5,000 radio subscribers and 8 control rooms, and enhances security by leveraging ATEX TETRA radios, a safety assistant app, and extensive sensor networks.

CHALLENGE

The primary security challenges involve **safeguarding the industrial areas**, including the routes of employees and fuel transport vehicles prone to theft. The vast scale of operations and the necessity to **monitor movements, enforce restricted areas**, and **utilize camera systems** for preemptive threat identification add to the complexity.

The potential for emergencies like malfunctions, fires, gas leaks, intrusions, and explosions requires immediate response capabilities, especially given the significant environmental risks.



SOLUTION

As part of the Tactical AVL system, we have supplied security managers in control rooms with **advanced mapping software** that enhances security by providing clear visibility of **vehicle and personnel movements** thanks to the integration of radios, apps, and locators. Geofencing has been instrumental in thwarting fuel theft, by sending **instant alerts** for route deviations. The system's tracking capabilities have swiftly apprehended **unauthorized access attempts**, reducing vandalism and sabotage. Camera analytics integration has been invaluable in **accident prevention**.

In emergency situations, such as a worker's fall or **detection of gas leaks**, the **'man down'** feature and sensors have enabled immediate response, drastically reducing the time to provide critical aid and thus **minimizing the severity of incidents**.

The ability to import custom maps and monitor vehicle movements has provided a **comprehensive view of operational activities**, enhancing the coordination of emergency responses and routine operations alike. This level of overview has been particularly beneficial during executive visits.

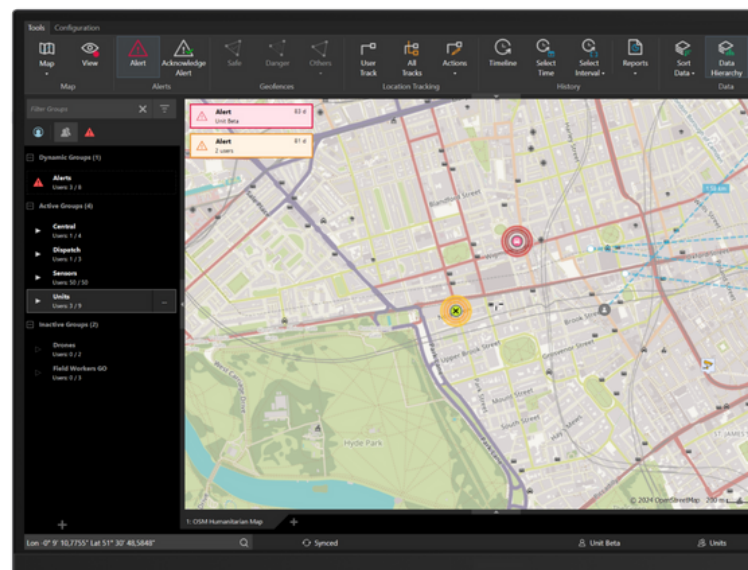
Quicker response in 70% of cases

40% decrease in thefts

RESULTS

Faster Response: Implementing Tactical AVL has led to a quicker response in 70% of cases, significantly improving security and situational awareness.

Reduction in Theft: The company has seen a significant reduction in theft incidents, with reported cases decreasing by over 40% within the first year of implementation.



Tactical AVL